

Canvas Transfers

Turn an Ordinary Print into a Rich Oil Painting!

The State-of-the-art Canvas Transfer process lets you emulate the rich textured appearance of an original oil painting. Select a print from our stock or vast collection of catalogs. Choose from hundreds of frames styles available at The Frame Center and enjoy your world-class piece of art for an entire lifetime.

Brushstrokes

Apply brushstrokes to recreate additional depth, texture, and richness just as you would find on an original oil painting. These strokes are hand-applied, turning each canvas transfer a unique piece of art.



At The Frame Center, we stretch your canvas in all the popular styles to fit any decor.

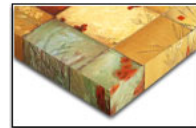
Museum Wrap

With the museum wrap method, the image goes to the edge of the surface with plain white sides. The picture image ends at the front with white canvas showing on the sides.



Gallery Wrap

With the gallery wrap method, the image wraps around the edge, and continues back toward the wall. The picture image wraps around the sides of the canvas creating a quality seamless look.



Deep Gallery Wrap Canvas

The picture image wraps around the sides of the canvas
Dramatic 1.5 inches deep.

